



Arbo Engineering  
 3 White Horse Rd, Unit 4  
 North York ONT M3J 3G8  
 Canada  
 Tel 416-636-7057  
 Fax 416-630-9135

The Arbo KDA-VV/10 feeders, introduced at the 1999 Powdex in Atlanta, Georgia, are completely new additions to the Arbo family of closed loop, resonant frequency, vibratory feeders. The VV/10 product line consists of a new vibratory drive motor, the FA-6, and two feeder models, the Microfeeder and Minifeeder, which have been designed specifically for precision volumetric and gravimetric feeding of free flowing pellets, micropellets and powders.

Standard VV/10 controls consists of a built-on Nema 12 control panel with digital volumetric pot, Off/On/Remote operator, and Arbo SE-WLS110 closed loop vibratory controller. Standard control is configured to accept control output from Hardy 2160 controller (supplied separately) for gravimetric operation.

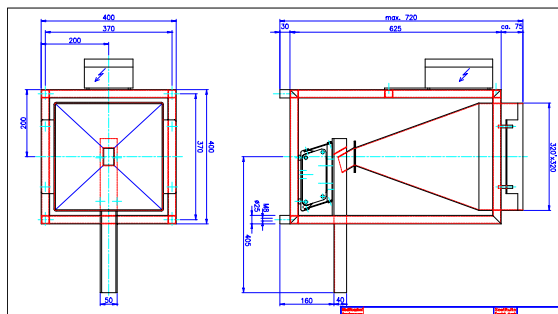


**KDA-VV/10 Microfeeder**

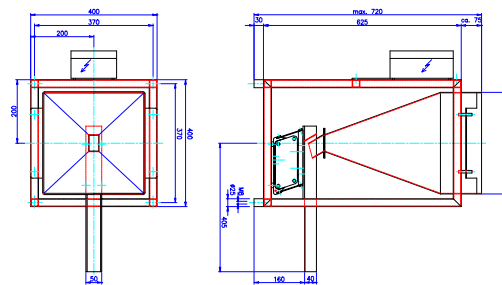
Drive Motor FA-6, 110 volt, 160 ma, resonant frequency drive  
 Feed Rate 0.10 to 50 lbs/hr depending on material  
 Hopper Type 304 SS, 0.35 ft<sup>3</sup> capacity  
 Net Weight 37½ lbs  
 Footprint 12" x 12"

**KDA-VV/10 Minifeeder DISCONTINUED**

Drive Motor FA-6, 110 volt, 160 ma, resonant frequency drive  
 Feed Rate 1 to 200 lbs/hr depending on material  
 Hopper Type 304 SS, 0.7 ft<sup>3</sup> Capacity  
 Net Weight 43 lbs  
 Footprint 15" x 15"



Net Price **\$3,495** with volumetric controls



Net Price **\$4,395** with volumetric controls