



Arbo Engineering Inc
 3 Whitehorse Rd, Unit 4
 North York, Ont M3J 3G8
 Canada

Tel (416) 636-7057
 Fax (416) 630-9135

KDA-VS/60 Single Screw Feeder

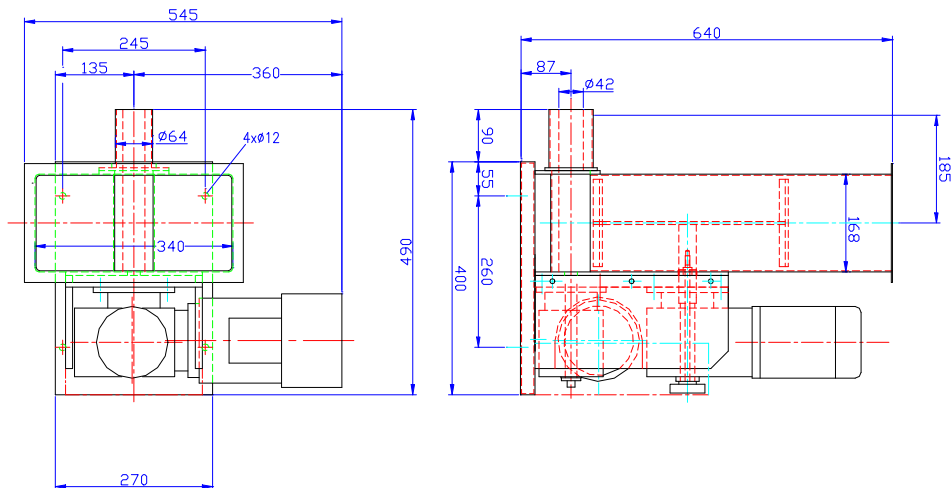
Arbo's new KDA-VS/60 single screw feeder is designed especially for more difficult materials such as TiO₂. The VS/60 features are very similar to the single screw version of the popular model VS/28, with snap-off hopper for quick cleanout and a horizontally hopper agitator.

The nominal capacity of the VS/60 is approximately 1200 pounds per hour depending on material density, flow characteristics and screw selection.

The windmill type horizontal agitator is driven by a separate AC gearmotor with DC main screw drive motor.



Capacity: ~ 31 ft ³ per hour	Hopper Capacity: 0.94 ft ³	Drive Motor: 0.84 hp (0.63 kw)
Agitator Motor: ¼ hp (0.18 kw)	Material: Type 304 Stainless	Screw Selection: From 30-60mm



Options:

Gravimetric Adaptation
 Motor Plug Connectors

Horizontal or Vertical Outlet
 Flexible Inlet & Outlet Boots

Hopper Cover with Quick Clamp
 Protective Grid on Hopper Inlet