



Arbo Engineering Inc
3 Whitehorse Rd, Units 4&5
Toronto, ON M3J 3G8
Canada

Tel (416) 636-7057
Fax (416) 630-9135

KDA-DV/35 Special Vibratory Tray Feeder

Dedicated hopper shapes and novel surface treatments for the hopper and the tray enables this vibratory tray feeder to feed difficult materials such as Calcium Carbonate type powders, fillers and sugary premix without the aid of an agitator. It also feeds large pieces of friable dry fruits such as sliced strawberries, without any damage.

The tray surface treatment is selected to match the material flow characteristic of your product. It may use the “bumpy boundary” effect to evenly move free-flowing powders, or a coated surface for sticky powders.

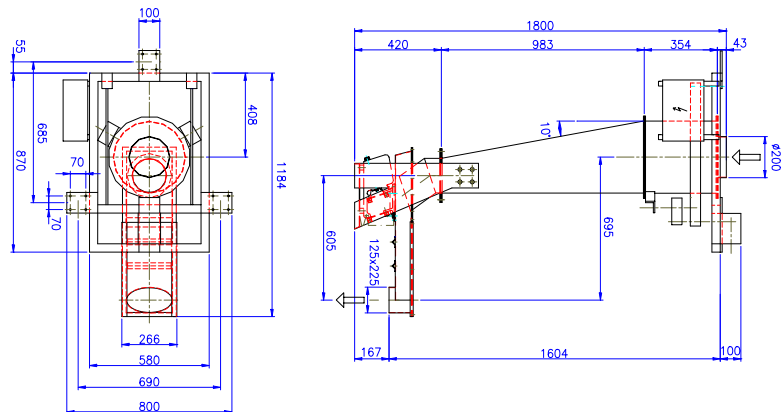
At half the cost of a screw feeder and twice the accuracy, this is an economic way to feed powders. There are no moving parts, no wear and tear and no need for spare parts. This LIW feeder employs a lever arm scale with a single, strain-gauge analog load cell and can be controlled by a variety of controllers such as ARBO’s Uniline or Multine, Hardy’s HI2160 or others. It also functions as an excellent LIW batching feeder.

A truly “maintenance-free” feeder.



Technical Data:

- 3 cuft hopper capacity
- 150 to 1500 lbs/hr in LIW Mode*
(limited by the refill factor)
- 150 to 4500 lbs/hr in volumetric mode
- 110 VAC single phase 1.5A power consumption @ 4500 lbs/hr



*for standard material with a bulk density of 31/lbs/cuft