



ARBO ENGINEERING INC.

3 WHITEHORSE ROAD UNITS 4&5

TORONTO, ONTARIO M3J 3G8

TEL: (416) 636-7057 FAX: (416) 630-9135

MINIDOSING: Universal LIW Feeder Controller



Universal analog continuous gravimetric control unit for LIW feeders

- Embedded analog drive for vibratory feeders
- AC motor screw feeders supported by using external VFD drive
- DC motor screw feeders supported by using external SCR drive
- Self learning feature reduces/eliminates time to regulation when changing set point (for example by changing recipe)
- Available with different types of enclosures or as OEM board
- Setpoint sources :
 - a) Computer set point (from 7" color TFT touch panel, from PLC or computer over Modbus RTU / Modbus TCP, Allen Bradley Ethernet IP for Ethernet networked units)
 - b) Current Loop set point input (4-20mA ; 0-20mA)
 - c) Analog set point input (Potentiometer, PLC analog output)
- Digital inputs : Enable, External Stop, Clear Alarm, Volumetric Digital relay outputs : Running, Refill, Alarm, Power Supply Check
- Networking capabilities: Ethernet Modbus TCP or Allen Bradley Ethernet IP. Modbus RTU for point to point communication.
- Security watchdog timer: if enabled it automatically stops the feeder in case of loss of communication with the PLC (for remote controlled units).
- Free configuration software and optional HMI operator software
- Embedded analog load cell amplifier with digital calibration
- Available mass units : g/h , kg/h, kg/min, mlb/h, lb/h, lb/min
- Many options available for great flexibility :
 - Up to 3 communication ports (Modbus RTU / Modbus TCP Allen Bradley Ethernet IP)
 - 7" color TFT touchpanel
 - Supervisory unit 10" panel PC for Ethernet networked units
 - analog output for external VFD units, 2nd analog output
 - optional current loop output



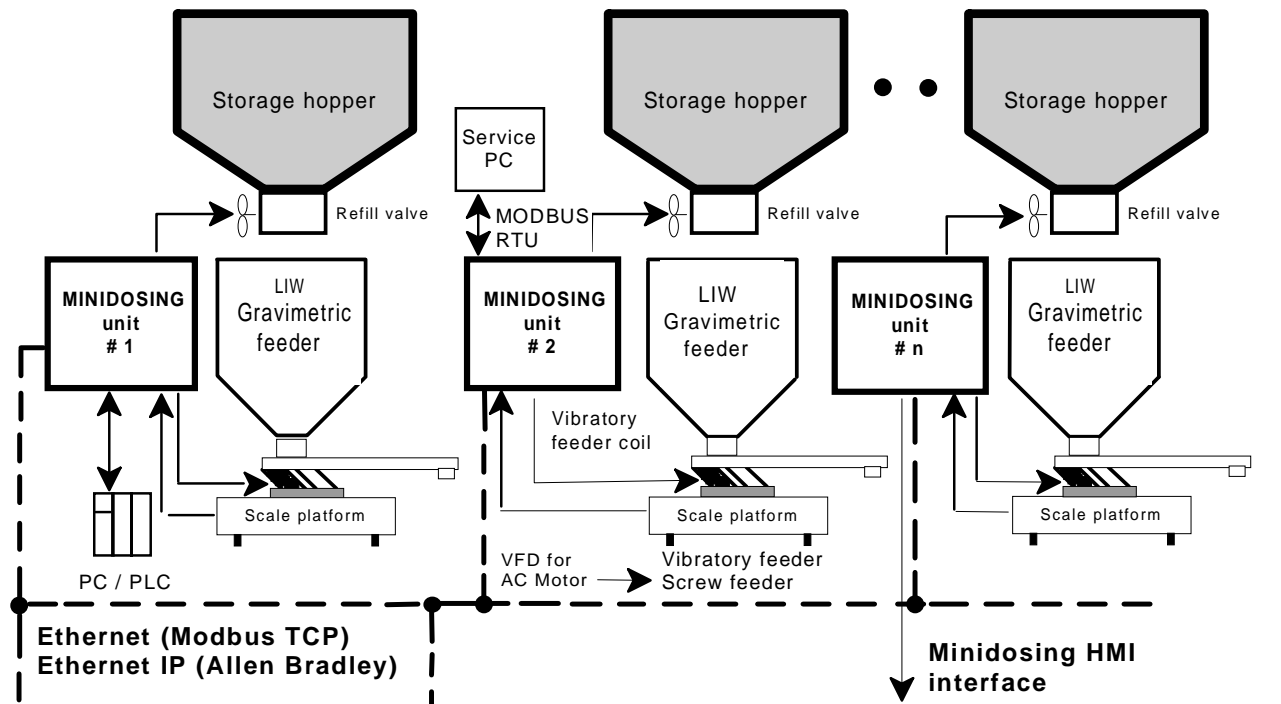
Summary

MINIDOSING is a very flexible **analog gravimetric loss in weight controller** based on reliable high performance technology meeting the most recent communication requirements of modern modular automation systems often controlled by PLCs or PC supervisory control units. The communication capabilities range from point to point (Modbus RTU) to Ethernet networked units (Modbus TCP, Allen Bradley Ethernet IP). The new hardware platform has been developed with the latest available technology combining the unbeatable performance and smoothness of analog controllers with modern digital requirements. Very attractive price to performance ratio combined with ease of use.

Available as plug and play unit with enclosure or OEM board

MINIDOSING is available as complete ready to use package with enclosure and related options or as OEM module for system integrators.

Application example



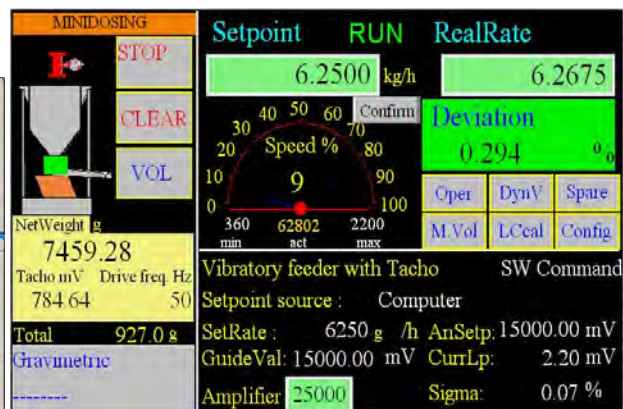
Multiple feeder supervisory unit for MD blind or HMI units



PC / PLC / HMI
AB
MODBUS
TCP CLIENT
SIEMENS
ROCKWELL
.....



HMI operator Software
MODBUS TCP
CLIENT
Ethernet IP (Allen Bradley)
Wonderware, Rockwell, SCADA.....



Technical specification

- Enclosure : Carbon steel 380x380x210 mm / SS 380x380x210 mm / metal plate or none for OEM version / others
- Power supply : 115 or 230 [VAC]. 50 and 60Hz.
- Analog LC amplifier : 2 [mV / V] , advised precision class C3. Up to 3 load cells connected in parallel (350 Ohm)
- Analog drive : for vibratory feeders with tachometer, external VFD for screw feeders with AC motor

Authorized Agency :